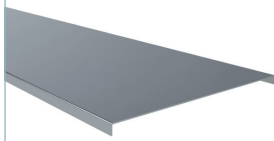




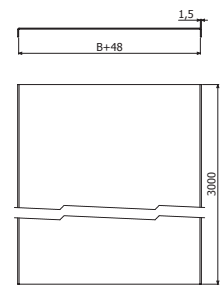
**TI**



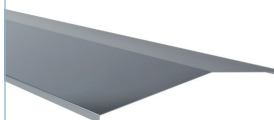
L = 3 m (10 ft)

	B		e	AL	
	inch	mm	mm	REF	Kg/m
TI 6 3M	6	150	1,5	2/12080	1,28
TI 9 3M	9	230	1,5	2/12081	1,68
TI 12 3M	12	300	1,5	2/12082	2,09
TI 18 3M	18	450	1,5	2/12083	2,90
TI 24 3M	24	600	1,5	2/12084	3,71
TI 30 3M	30	750	1,5	2/12085	4,51
TI 36 3M	36	900	1,5	2/12086	5,33

4 x PTI (2/12095) → 1 x TI



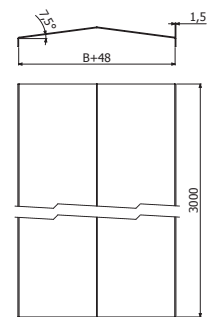
**T2AI**



L = 3 m (10 ft)

	B		e	AL	
	inch	mm	mm	REF	Kg/m
T2AI 6 3M	6	150	1,5	2/12087	1,33
T2AI 9 3M	9	230	1,5	2/12088	1,94
T2AI 12 3M	12	300	1,5	2/12089	2,55
T2AI 18 3M	18	450	1,5	2/12090	3,78
T2AI 24 3M	24	600	1,5	2/12091	5,00
T2AI 30 3M	30	750	1,5	2/12092	6,23
T2AI 36 3M	36	900	1,5	2/12093	7,46

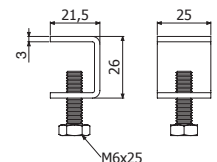
4 x PT2AI (2/12094) → 1 x T2AI



**PTI**



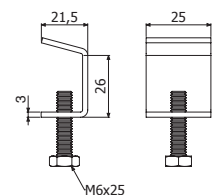
PTI	Pap	e	AL	
	Nm	mm	REF	Kg/ud
	6	3	2/12095	0,01



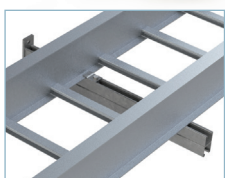
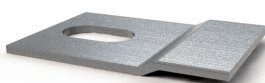
**PT2AI**



PT2AI	Pap	e	AL	
	Nm	mm	REF	Kg/ud
	6	3	2/12094	0,01



**BI**



	e	AL	
	mm	REF	Kg/ud
BIS	4	2/14472	0,02
BIR	4	2/15445	0,02

SP/SPD --> DIN933 M10X30 (2/17547 - i304) + TM41 M10 (2/17584 - GC)

